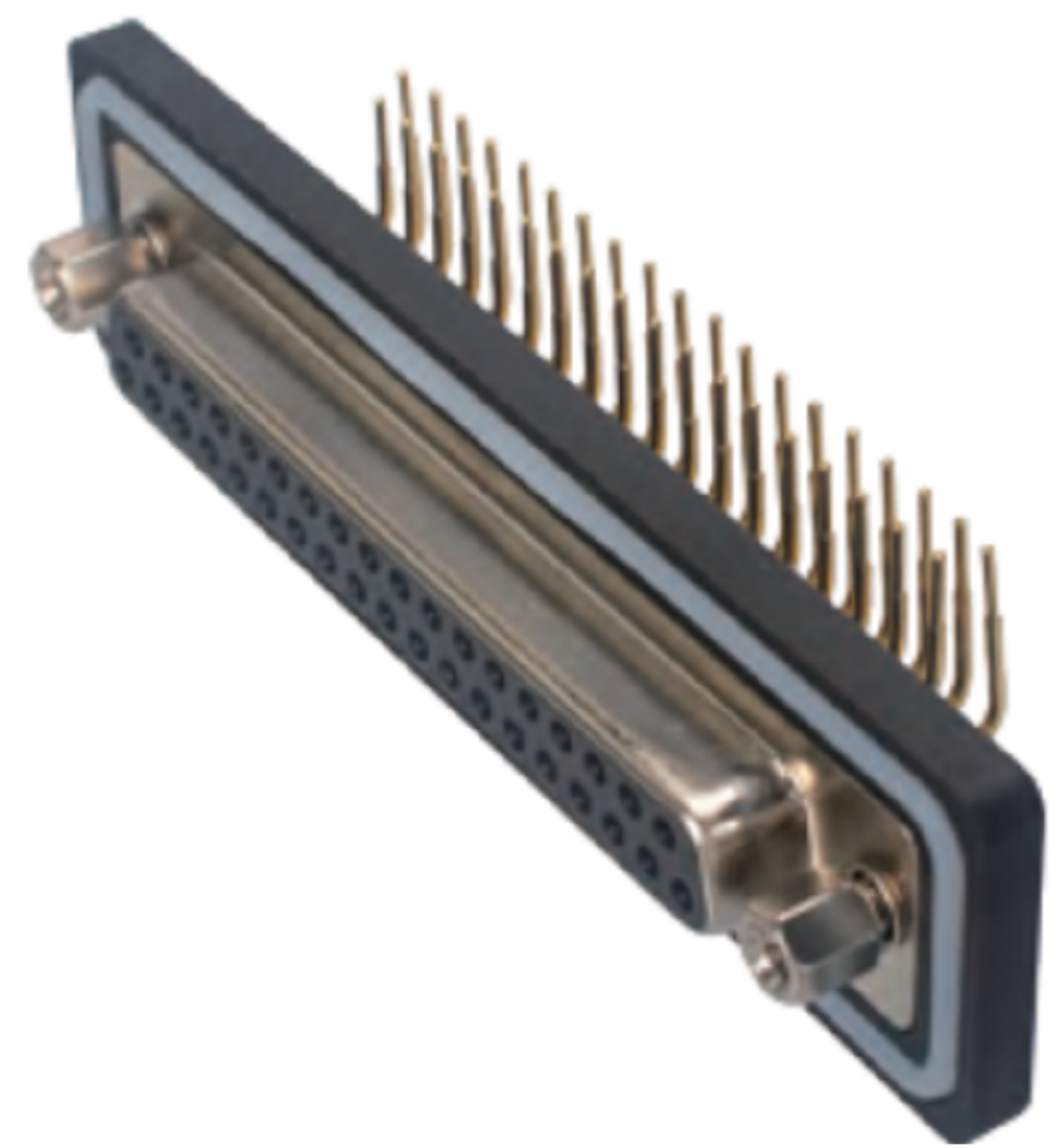


弯式孔型插座(焊板式)
 EDB4 Curved Female Socket(PCB)
 EDB4 - F 37 - PPL 14

芯数:
 37
 62H
 8W8
 13W6
 21W4
 25W3
 27W2

大针线规:
 14:14AWG
 10:10AWG
 08:8AWG
 06:6AWG(默认)
 空:小针



产品参数 PRODUCT PARAMETERS

额定电流 Rated current	10A/20A/30A/40A	插拔力 Plug and unplug force	符合IEC60807-3
额定电压 Rated voltage	1000 V	接线范围 Wire bound	8mm~14mm
耐电压 Withstand Voltage	500 V	插拔次数 Durability	≥500次(Cycles)
绝缘阻抗 Insulation resistance	5000 MΩ	适用温度 Applicable temperature	-55°C ~ +105°C
接触阻抗 Contact resistance	10 mΩ	防水等级 Waterproof grade	IP65/IP67

东莞市高迪电子有限公司
 DONG GUAN GAO DI ELECTRONICS CO., LTD

TOLERANCE UNLESS OTHERWISE STATED:
 Up to 5 ±0.2
 Above 5 ~ 15 ±0.3
 Above 15 ~ 30 ±0.4
 Above 30 ~ 50 ±0.5
 Angle ±0.3°

3RD. ANGEL'S

UNITS MM

DRAWN BY:	DATE	MAT'L	TITLE	CONNECTOR
Jack Lu	12/13/19			
CHECKED BY:	DATE	FINISH	MODLE	EDB4 - F 37 - PPL 14
Jacky Chen	12/13/19			
APPROVED BY:	DATE	SCALE	DWG NO.	
Tony Kao	12/13/19	1:1		
		SHEET NO.	PART NO.	
		1 of 1		

ITEM NO.	DESCRIPTION	DRAWN	DATE